

Homework and Remote Learning for Owls Class

Date: Monday 8th February 2021

Date due: Friday 12th February 2021

Spellings = Compulsory

'ably' and 'ibly word endings

Find 10 words which end with ibly and ably.

Practise spelling them and ensure you know the meaning by putting them into sentences.

Timetables = Compulsory

<https://www.timestables.co.uk/multiplication-tables-check/>



Mathletics

Reading Task = Compulsory



Read daily (4x per wk) and record 3 words and work out the meanings in context and check in a dictionary.

PE (Physical Education)

Virtual Skipping Challenge. Watch the videos and complete the personal record sheet.

https://www.youtube.com/channel/UCVPIN5ov_S7JczaVOGJQ7WA

This week stay fit with Bluey, ITFC mascot and Blue Planet.

<https://www.youtube.com/watch?v=i49PcMmv25U>

Topic (History and Geography)

How are the geographical features of Scandinavia and the UK similar and different?

Research some of the following physical and human features of England and Norway.

Location, climate, landscape, population, famous landscapes, culture, food, famous buildings, rivers, festivals, art, music, mountains...

Complete the worksheet

Science

How are plants adapted to different environments?

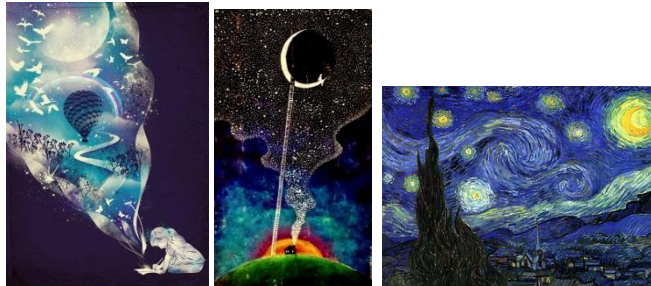
Watch the video links on the worksheet and research how plants are adapted to survive.

Follow the instructions on the worksheet to complete your task.

Art Grayson Art club Competition

<https://www.graysonartclub.com/>

The fourth theme for 2021 is 'Dreams'



Music

Understand syncopated rhythms and learn a traditional song from Nigeria.

<https://classroom.thenational.academy/lessons/to-understand-syncopated-rhythms-70u34t>

Follow the video on the link above and complete the tasks, worksheet and quiz.

Computing

Complete the tasks using the link to the Oaks Academy Website

<https://classroom.thenational.academy/lessons/variables-in-programming-cmtpad>